

SHU Dental laboratory, Inc.

Compatible with any open scanner!

- ❖ TRIOS 3Shape
- ❖ Carestream CS
- ❖ iTero
- ❖ Planmeca E4D
- ❖ True Definition 3M
- ❖ CEREC Dentsply
- ❖ Sirona
- ❖ Straumann CARES
- ❖ Dental Wings
- ❖ Medit i500

*If you don't see your scanner mentioned please give us a call!!



Compatible implant companies:

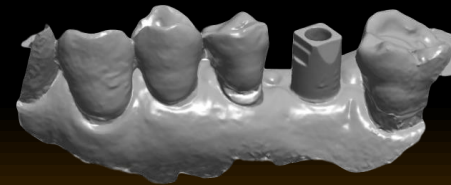
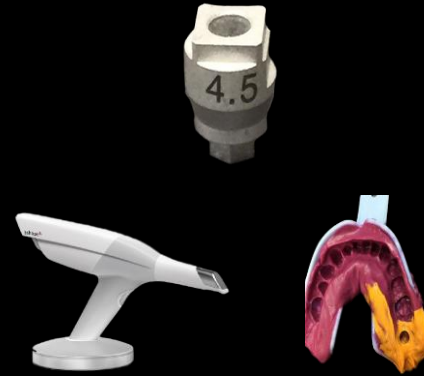
- ❖ 3I Biomet
Certain®*
- ❖ Noble Active®*
- ❖ Noble Replace
Select®*
- ❖ Osstem®*
- ❖ Dentium®*
- ❖ Zimmer®*
- ❖ Implant Direct
Legacy 3®*
- ❖ Astra Tech TX®*
- ❖ MIS®*
- ❖ Megagen®*

*Compatible companies are not trademarks of Shu Dental Lab

Don't have a scanner? No problem! Take an impression!

Our scan body works with intra oral scan or impression!

Get a more accurate implant custom abutment and crown while saving time and money!



SHU Dental Laboratory, Inc
102 W. Bridge St, Morrisville PA 19067
215.295.0088 PH 215.295.0899 FX
shuscan@gmail.com www.shudental.com

